

Winter Silhouettes

Seasons

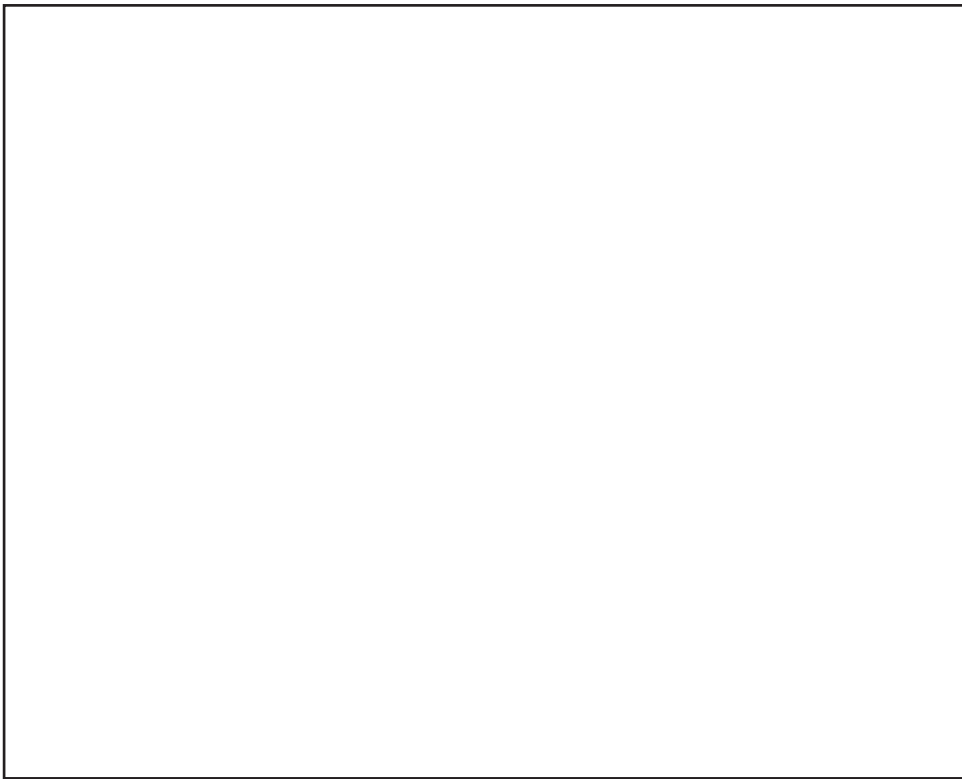
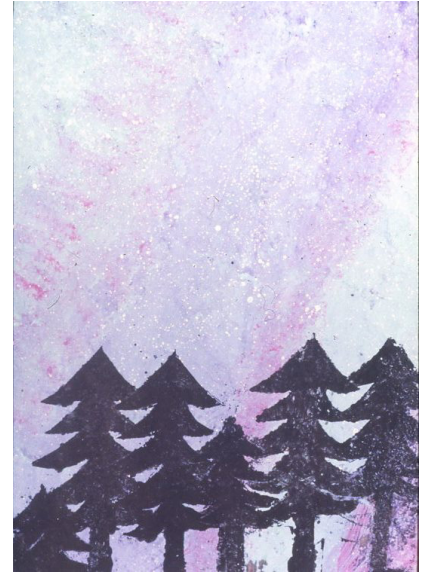


RESPOND to the way winter scenes often include long shadows and a limited colour palette of shades of grey, black, and white. Winter art often shows snow covered streets, fields, and hilly landscapes which are boldly contrasted with dark silhouettes of buildings, trees, and vehicles. Review the history and meaning of the word silhouette and how an 18th century French leader Etienne de Silhouette's hobby of cutting paper and creating shadow portraits is still popular today.



CREATE a winter silhouette scene based on a place you have visited or a scene you have observed, imagined, or read about. Use this page to sketch a draft of your plan, mapping out a horizon line across the drawing area and deciding what objects you will draw as background and what objects you will cut out of black construction paper and glue to your scene.

SKETCH A PLAN OF YOUR SCENE THAT YOU'LL LATER CREATE AS A CUT-PAPER COLLAGE.



PRESENT your draft sketch to a classmate and explore the one that person created. Take turns describing what each of you observed in the other's sketch and provide feedback on how it might be translated into a larger silhouette cut paper collage.



CONNECT your winter scene to mystery storytelling. Imagine the scene is the setting where an unexpected event occurs. How does the use of muted colours and the winter season set the stage for the interesting sounds and sights you'll describe to open the story? How will you draw listeners into what happens next and stir their sense of caution and bewilderment? For example, how might a forceful gust of wind and loud bang indicate your characters might be in danger? Who might listeners expect to appear out of nowhere in this thriller you create?