

# Apples Travel from Tree to Tummy

## COLORFUL LEARNING



**CONNECT** the roles of writer and researcher as you explore apples. Researchers gather information about where and when apples grow and the challenges the fruits face as they are harvested and transported. Writers compose a story and choose a genre that fits the main message an apple would want to tell.

JOT YOUR RESEARCH NOTES HERE.



---

---

---

---

---

As you explore an apple's journey from tree to tummy, organize the facts you learned and questions you have. Then decide how you will tell the apple's story. Perhaps you'll write:

- an illustrated news article about weather challenges or transportation options,
- a diary from the apple's point of view,
- a video script showing an apple's journey from tree to tummy, or
- a list of interview questions you would ask in a podcast to learn how an apple moves from a tree to a school cafeteria.

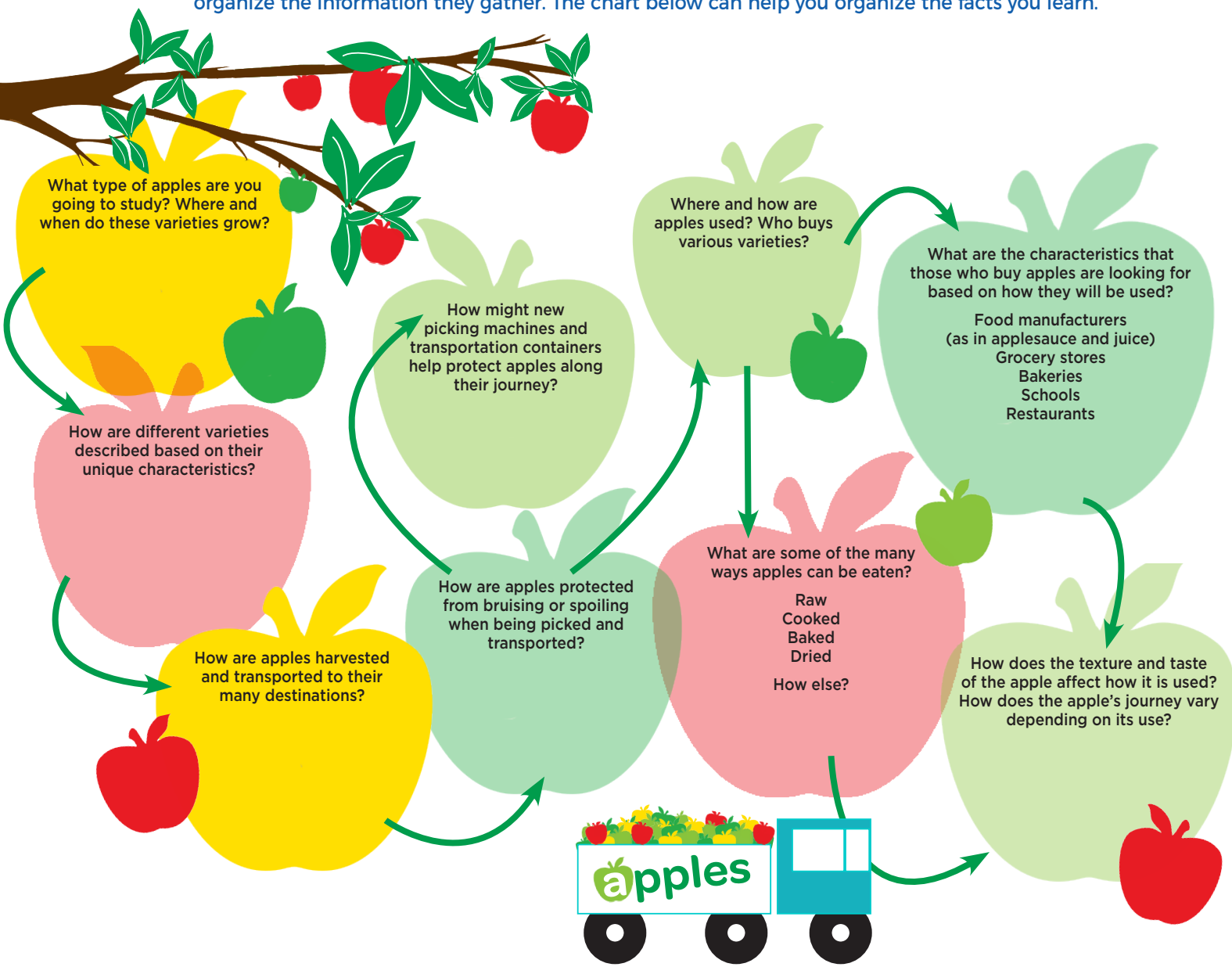
Or pick any other genre, such as a comic strip or advertisement, that you'll use to tell the apple's story.

# Apples Travel from Tree to Tummy

## COLORFUL LEARNING



**RESPOND** to the information you researched and additional questions you are curious about. For example, do you wonder why certain apple varieties grow in some geographic areas but not others? Or perhaps when and how apples are harvested and stored so you can eat them year round? What do apple picking machines or tools look like and how might you design a more innovative apple picking tool? How are apples transported from the orchard to their next destination, whether that is a school, restaurant, grocery store, or farmers market)? How are they prepared and eaten (raw, cooked, baked)? Researchers organize the information they gather. The chart below can help you organize the facts you learn.



---

---

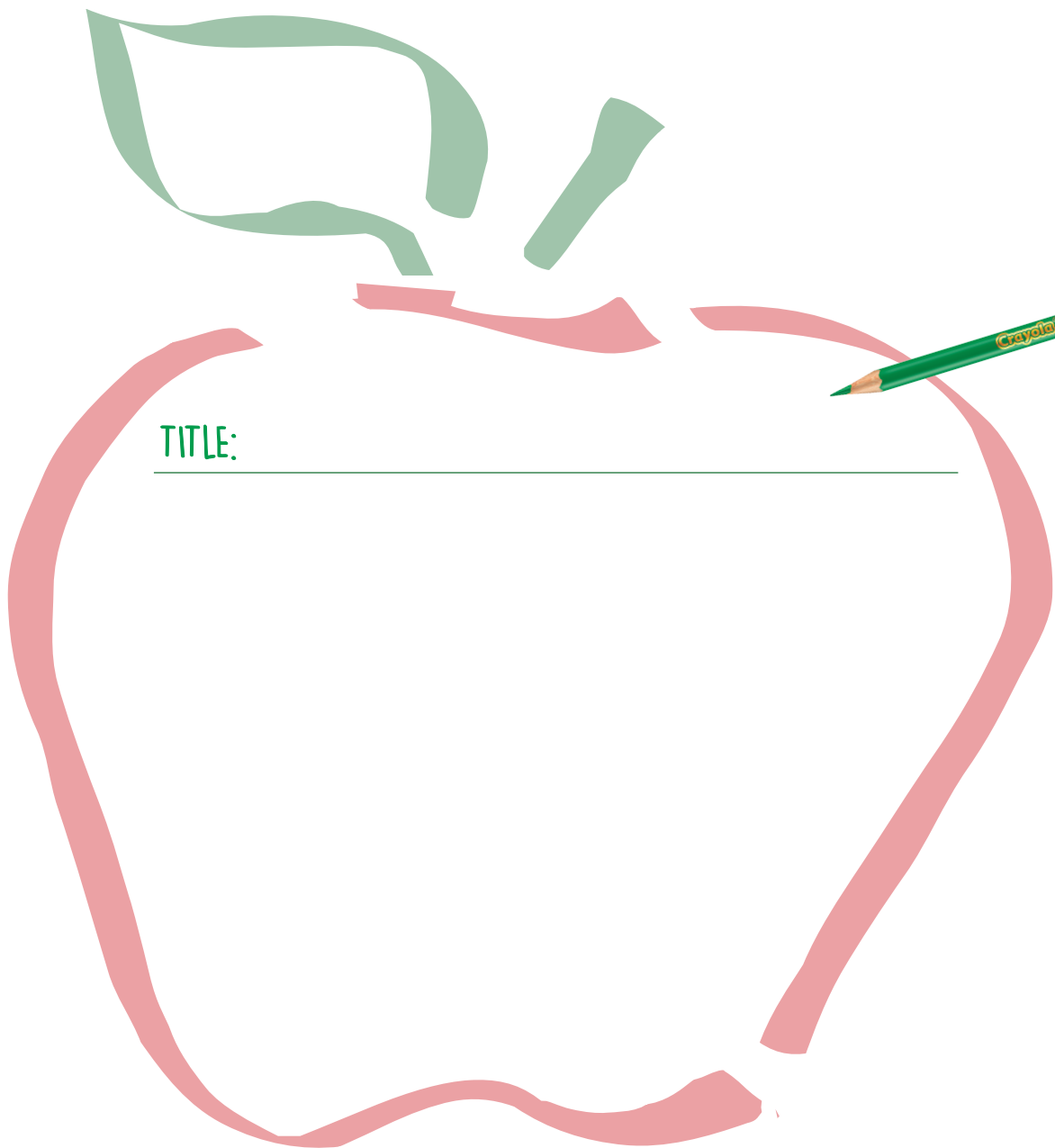
---

# Apples Travel from Tree to Tummy

## COLORFUL LEARNING



**CREATE** the story of your apple's journey from tree to tummy. Choose a genre that fits your message. Whose voice and point of view will you use? Use imaginative ways to share the facts you learned during your research, for example you could pretend that apples could talk. Illustrate your story to emphasize key messages that help others understand.



TITLE: \_\_\_\_\_



**PRESENT** your story and share your research organization chart. Ask the audience for questions and feedback. A playful way for them to respond would be having them pretend to be part of the journey—the grower, harvester, transportation vehicle, or another apple in the crate—as they ask you questions or provide comments about your presentation.