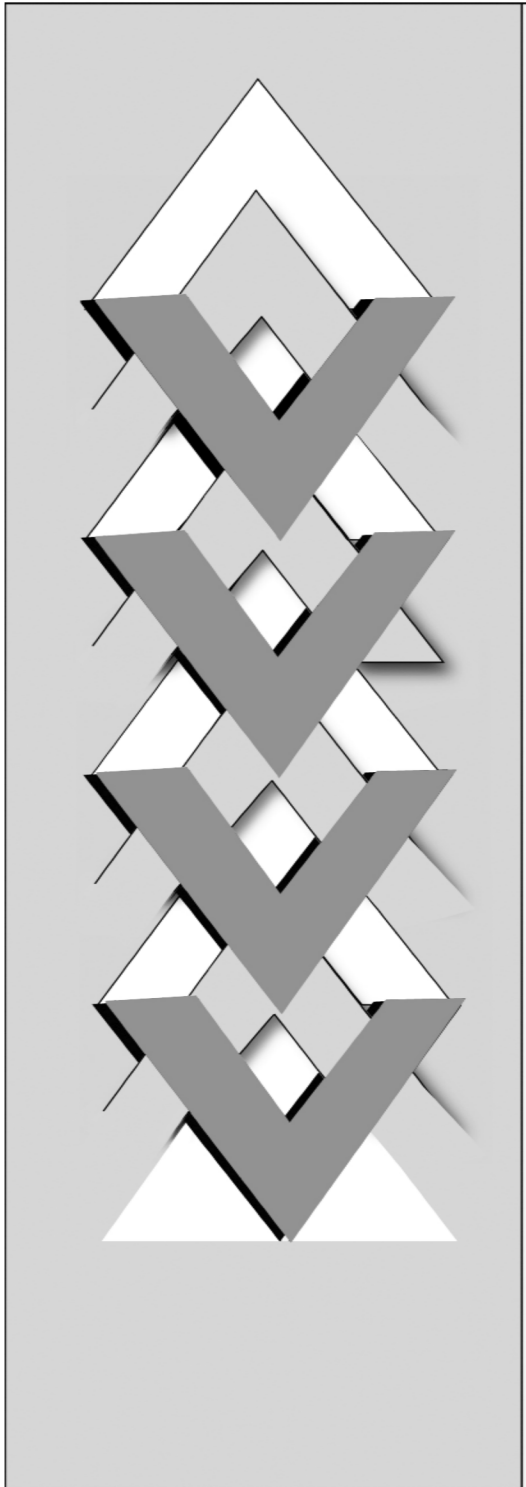
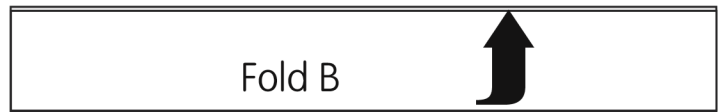


KIRIGAMI REVERSIBLE BOOKMARK – Fold and Cut Paper



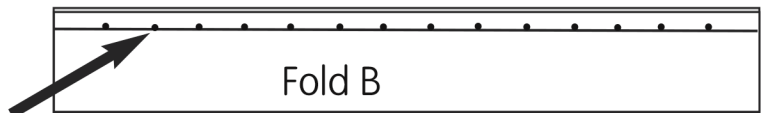
1. Use paper 15.2 cm x 22.8 cm (6" x 9").
Fold the paper in half lengthwise (long end to long end).



2. Fold it in half lengthwise again.



3. Lightly draw a line parallel to the long side of the paper 1 cm from the open edge.



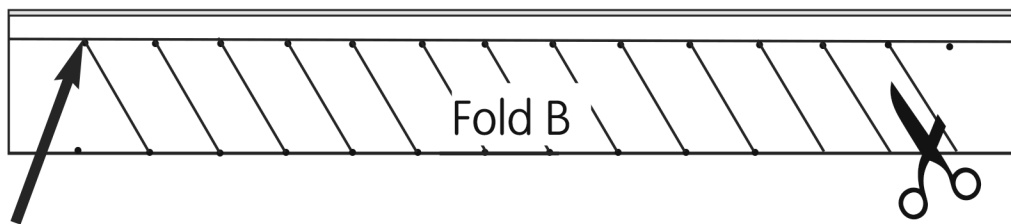
4. Measure and mark 2 cm spaces along the line.



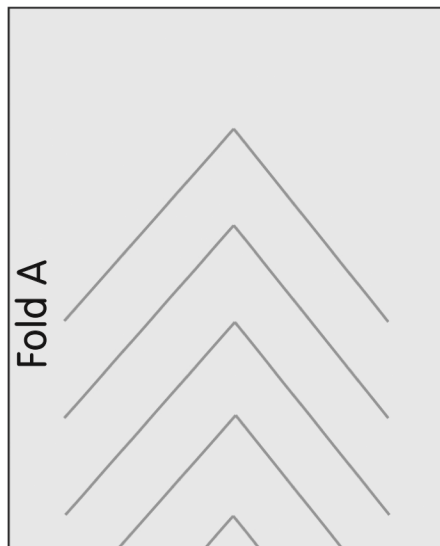
5. Measure and mark 2 cm spaces along the fold so that they are exactly opposite the other marks.



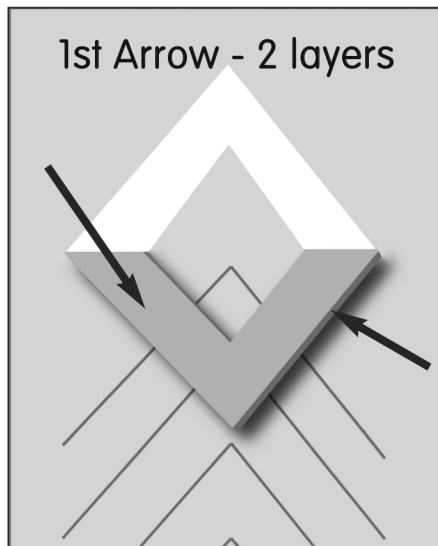
6. Draw a line on an angle from the first 2 cm mark on the folded edge to the 4 cm mark on the line. Continue drawing lines 2 cm apart on an angle, and parallel to the first line until you get to the end.



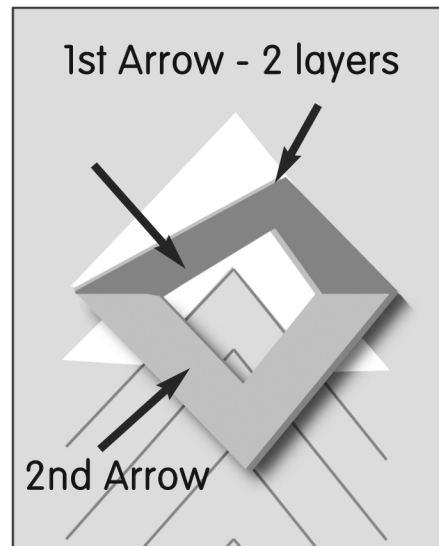
7. Cut along the lines, starting at the fold and stopping at the line.



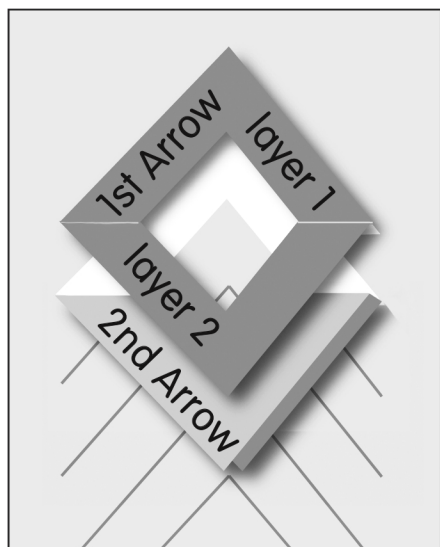
8. Open the paper to the *Fold A* position. Place the paper on the desk with the arrow shapes pointing up.



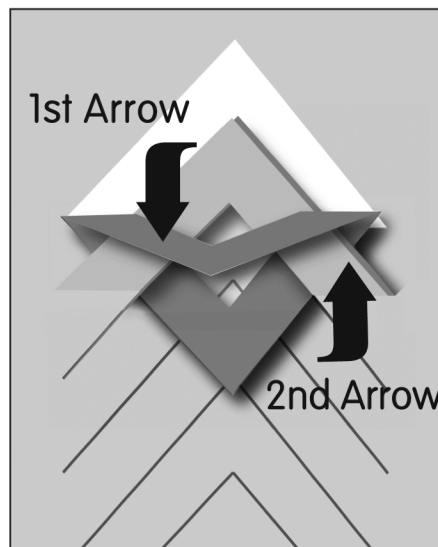
9. Begin at the top. Each arrow shape will have 2 layers. Fold the first arrow shape down and crease it firmly at the sides.



10. Look to the edge of the cuts for the 2nd arrow below the 1st arrow. Fold that arrow down.



11. Open the first arrow. It looks like a little bird's open mouth.



12. Insert the 2nd arrow between the layers of the first arrow. Fold the top layer of the 1st arrow down. The 2nd arrow should be tucked between the 2 layers of the first arrow.



14. Use a glue stick to fasten the ends of the arrows and the edges of the paper in place.

15. Trim the triangle at the bottom.

13. Continue in this way until you have folded all the arrow shapes.